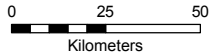


**Map 1: ASMA No. 5 - South Pole - Location and topography**



05 Apr 2016 (Map ID: 10069.010.04)  
 United States Antarctic Program  
 Environmental Research & Assessment



- Contours (50 m)
- ASMA Boundary
- Station building
- Permanent ice
- Clean Air Sector

Projection: Polar Stereographic;  
 Spheroid and horizontal datum: WGS84;  
 Data source: Coast & topography: SCAR ADD (v.6 - 2012).